

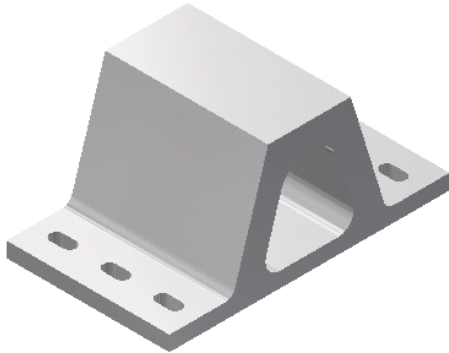


V FENDER DATA SHEET

1000.0000-Td-0201fen_rev3

Rev.	Date	Description	Prepared by	Checked by	Approved by
0	06/03/2014	First Issue	BFA	DBL	GEB
1	09/03/2015	General Revision	BFA		GEB
2	12/03/2015	Energy Revision	BFA		GEB
3	15/05/2015	General Revision	BFA		GEB

1. V FENDERS



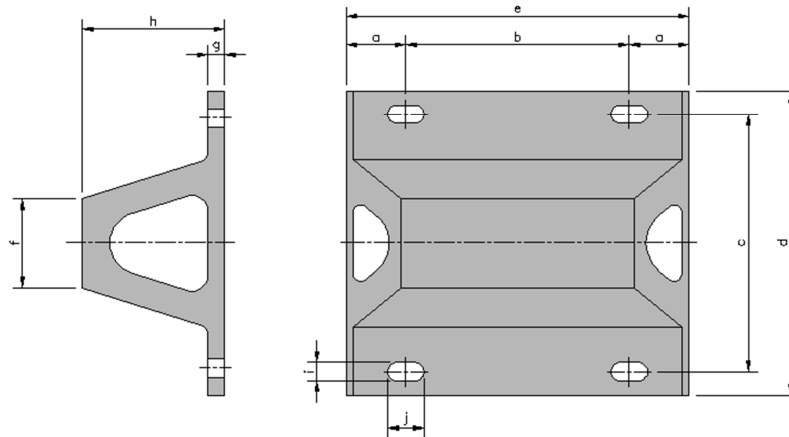
Features

- One piece design
- Strong and durable design
- Wide range of standard sizes

Applications

- All kind of berths (coastal, river, tidal and non-tidal)
- All types of jetties (open pile, dolphins, monopiles, mass structures...)
- All types of ships (general cargo, bulk carrier, oil tanker, gas carrier, passenger...)

2. DIMENSIONS



Fender	a	b	c	d	f	g	h	i	j	Weight (kg)	NºAnchors/ Metric
V-150	250	500	265	320	95	20	150	25	50	36	4xM.22
V-200	250	500	350	445	125	25	200	35	70	60	4xM.30
V-250	250	500	400	500	160	30	250	35	70	69	4xM.30
V-300	250	500	530	645	190	35	300	40	80	108	4xM.36
V-400	250	500	710	840	250	40	400	50	100	208	4xM.36
V-500	250	500	860	1000	315	40	500	55	110	312	4xM.42
V-600	250	500	1050	1210	380	50	600	60	120	459	4xM.42
V-800	250	500	1350	1550	500	60	800	60	120	739	6xM.52
V-1000	250	500	1600	1800	625	75	1000	65	130	1402	6xM.56
V-1300	250	500	2030	2250	813	98	1300	85	170	2324	6xM.64

All dimension in mm unless otherwise specified.
Lengths "a" and "b" may vary depending on the project.
Number of anchors per meter of fender.

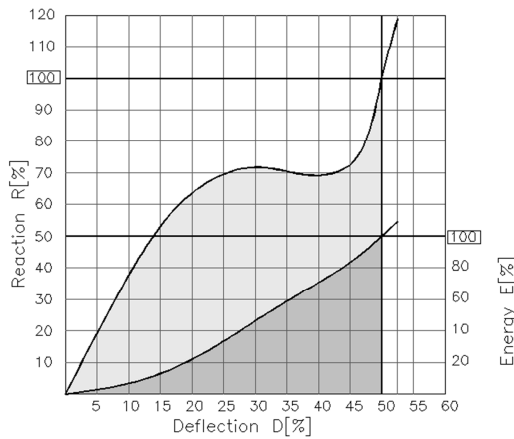
Fender	e				
	1000	1500	2000	2500	3000
V-150	☒	☒	☒	☒	☒
V-200	☒	☒	☒	☒	☒
V-250	☒	☒	☒	☒	☒
V-300	☒	☒	☒	☒	☒
V-400	☒	☒	☒	☒	☒
V-500	☒	☒	☒	☒	☒
V-600	☒	☒	☒	☒	☒
V-800	☐	☒	☒	☒	☒
V-1000	☐	☒	☒	☒	☒
V-1300	☐	☒	☒	☒	☒

☒ Standard lengths
☐ Non-standard lengths
For others lengths consult with Prosertek

3. NOMINAL FENDER PERFORMANCE*

Fender		Grade		
		A	B	C
V-150	R	176	154	115
	E	7.8	6.8	5.1
V-200	R	230	200	150.5
	E	11.8	10.3	7.7
V-250	R	290	253	190
	E	18.5	16	12.1
V-300	R	340	297	222.5
	E	26.6	23	17.4
V-400	R	454	396	297.1
	E	47.3	41.3	30.9
V-500	R	599	523	392
	E	74.2	65	48.5
V-600	R	691	603	452.2
	E	107	93	70
V-800	R	920	803	602
	E	190	166	124.3
V-1000	R	1112	970	727.8
	E	297.6	260	195
V-1300	R	1477	1290	967
	E	500	436	327.2

Also available other grades.
Reaction and energy values per meter of fender.



• Temperature factor:

Temperature (°C)	TF
+50	0.90
+40	0.94
+30	0.97
+23	1
+10	1.05
0	1.09
-10	1.16
-20	1.25
-30	1.35

• Angle factor:

Angle (°)	AF
0	1
3	0.96
5	0.95
8	0.93
10	0.91
15	0.81
20	0.60

• Velocity factor:

Fender	Impact velocity (mm/s)						
	1	50	100	150	200	250	300
V-150	0.85	0.90	0.95	1	1.04	1.08	1.11
V-200	0.85	0.90	0.95	1	1.04	1.08	1.11
V-250	0.86	0.91	0.96	1	1.03	1.07	1.10
V-300	0.87	0.92	0.96	1	1.03	1.06	1.09
V-400	0.87	0.92	0.96	1	1.03	1.06	1.09
V-500	0.89	0.93	0.96	1	1.03	1.05	1.08
V-600	0.90	0.93	0.97	1	1.02	1.05	1.07
V-800	0.91	0.94	0.98	1	1.02	1.04	1.06
V-1000	0.91	0.94	0.98	1	1.02	1.04	1.06
V-1300	0.92	0.95	0.99	1	1.01	1.03	1.05

Intermediate grades								
A1	A2	A3	B1	B2	B3	C1	C2	C3
11%	8%	4%	11%	8%	4%	13%	10%	7%

Intermediate deflections											
D (%)	5	10	15	20	25	30	35	40	45	50	52.5
R (%)	19	38	53	64	70	72	70	69	73	100	119
E (%)	3	7	13	22	33	46	59	71	83	100	109

All dimension in mm, kN or kNxm unless otherwise specified.
* (E) Energy [kNxm] and (R) Reaction [kN] values according to PIANC 2002

4. TOLERANCES

Dimension	Tolerances
General dimensions	±3% or 2mm*
Distances between fixing centres	±4mm (Non-cumulative)
Flange thickness	±15mm
Diameters of the fixing points	±5mm
Energy performance	±10%
Reaction performance	±10%

* Whichever is the greater dimension.