



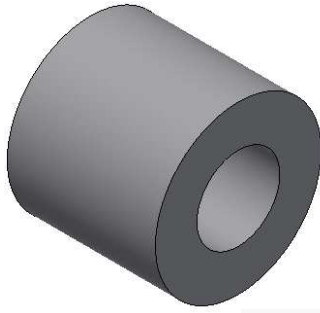
## C FENDER DATA SHEET

**1000.0000-Td-0201ien\_rev3**

Rev.	Date	Description	Prepared	Checked	Approved
0	06/03/2014	First Issue	BFA	DBL	GEB
1	29/04/2015	General Revision	BFA		GEB
2	07/05/2015	General Revision	BFA		GEB
3	13/05/2015	General Revision	BFA		GEB



## 1. C FENDERS



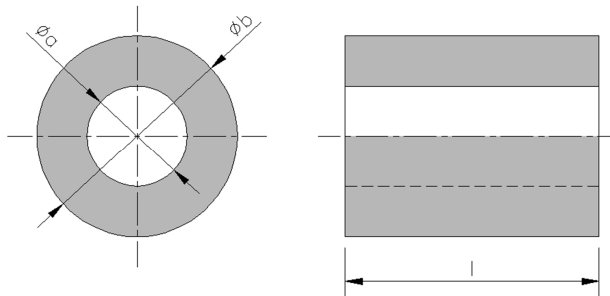
### Features

- Simple to install and maintain
- Wide range of sizes
- Economical design

### Applications

- All kind of berths (coastal, river, tidal and non-tidal)
- All types of jetties (open pile, dolphins, monopiles, mass structures...)
- All types of ships (general cargo, bulk carrier, oil tanker, gas carrier, passenger...)

## 2. DIMENSIONS



Fender	a	b	Weight (kg)
150-75	75	150	16
200-100	100	200	28
250-125	125	250	43
300-150	150	300	63
380-190	190	380	100
400-200	200	400	111
450-225	225	450	141
480-240	240	480	160
500-250	250	500	174
540-270	265	530	195
600-300	300	600	250
700-350	350	700	341
800-400	400	800	445
900-450	450	900	563
1000-500	500	1000	695
1100-550	550	1100	841
1200-600	600	1200	1001
1300-650	650	1300	1175
1400-700	700	1400	1363
1400-800	800	1400	1224
1500-750	750	1500	1564
1600-800	800	1600	1779
1700-850	850	1700	2009
1800-900	900	1800	2252
1900-950	950	1900	2510
2000-1000	1000	2000	2780
2100-1050	1050	2100	3065
2200-1100	1100	2200	3364
2300-1150	1150	2300	3677
2400-1200	1200	2400	4004
2500-1250	1250	2500	4344
2600-1300	1300	2600	4699
2700-1350	1350	2700	5067
2800-1400	1400	2800	5449

All dimension in mm unless otherwise specified.  
Lengths "a" and "b" may vary depending on the project.

Fender	l				
	1000	1500	2000	2500	3000
150-75	☒	☒	☒	☒	☒
200-100	☒	☒	☒	☒	☒
250-125	☒	☒	☒	☒	☒
300-150	☒	☒	☒	☒	☒
380-190	☒	☒	☒	☒	☒
400-200	☒	☒	☒	☒	☒
450-225	☒	☒	☒	☒	☒
480-240	☒	☒	☒	☒	☒
500-250	☒	☒	☒	☒	☒
540-270	☒	☒	☒	☒	☒
600-300	☒	☒	☒	☒	☒
700-350	☒	☒	☒	☒	☒
800-400	☒	☒	☒	☒	☒
900-450	☒	☒	☒	☒	☒
1000-500	☒	☒	☒	☒	☒
1100-550	☒	☒	☒	☒	☒
1200-600	☒	☒	☒	☒	☒
1300-650	☒	☒	☒	☒	☒
1400-700	☒	☒	☒	☒	☒
1400-800	☒	☒	☒	☒	☒
1500-750	☒	☒	☒	☒	☒
1600-800	☒	☒	☒	☒	☒
1700-850	☒	☒	☒	☒	☒
1800-900	☒	☒	☒	☒	☒
1900-950	☒	☒	☒	☒	☒
2000-1000	☒	☒	☒	☒	☒
2100-1050	☒	☒	☒	☒	☒
2200-1100	☒	☒	☒	☒	☒
2300-1150	☒	☒	☒	☒	☒
2400-1200	☒	☒	☒	☒	☒
2500-1250	☒	☒	☒	☒	☒
2600-1300	☒	☒	☒	☒	☒
2700-1350	☒	☒	☒	☒	☒
2800-1400	☒	☒	☒	☒	☒

☒ Standard lengths

☐ Non-standard lengths

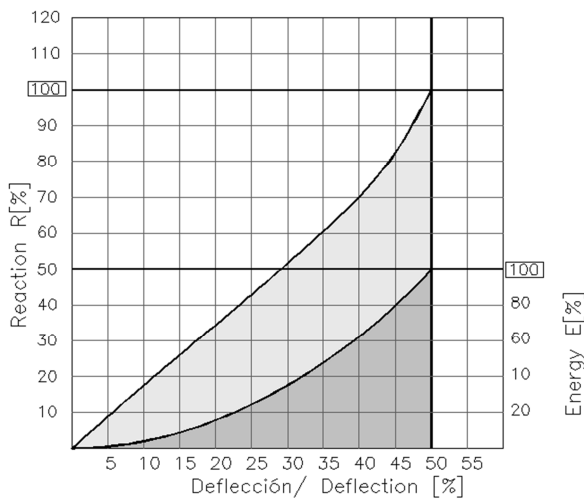
For others lengths consult with Prosertek

### 3. NOMINAL FENDER PERFORMANCE\*

Fender		Grade	
		A	B
150-75	R	73.8	46.1
	E	2.5	1.6
200-100	R	98.3	61.5
	E	4.5	2.8
250-125	R	123	77
	E	7	4.4
300-150	R	148	92
	E	9.9	6.2
380-190	R	187	117
	E	15.8	9.9
400-200	R	197	123
	E	17.5	10.9
450-225	R	221	138
	E	22.2	13.9
480-240	R	236	148
	E	25.2	15.8
500-250	R	246	154
	E	27.4	17.1
540-270	R	261	163
	E	30.7	19.2
600-300	R	295	185
	E	39.4	24.6
700-350	R	344	215
	E	53.6	33.5
800-400	R	394	246
	E	70	43.8
900-450	R	443	277
	E	88.6	55.4
1000-500	R	495	309
	E	109	68.1
1100-550	R	541	338
	E	132	82.7
1200-600	R	590	369
	E	158	98.5

Fender		Grade	
		A	B
1300-650	R	640	400
	E	185	116
1400-700	R	689	431
	E	215	134
1400-800	R	472	295
	E	178	111
1500-750	R	738	461
	E	246	154
1600-800	R	787	492
	E	280	175
1700-850	R	837	523
	E	316	198
1800-900	R	886	554
	E	355	222
1900-950	R	935	584
	E	395	247
2000-1000	R	984	615
	E	438	274
2100-1050	R	1033	646
	E	483	302
2200-1100	R	1083	677
	E	530	331
2300-1150	R	1132	707
	E	579	36.2
2400-1200	R	1181	738
	E	630	394
2500-1250	R	1230	769
	E	684	428
2600-1300	R	1279	800
	E	740	462
2700-1350	R	1329	830
	E	798	499
2800-1400	R	1378	861
	E	858	536

Also available other grades.  
Reaction and energy values per meter of fender.



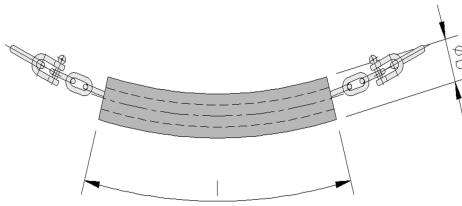
Intermediate grades					
A1	A2	A3	B1	B2	B3
12%	8%	5%	12%	8%	5%

Intermediate deflections										
D (%)	5	10	15	20	25	30	35	40	45	<b>50</b>
R (%)	9	17	26	34	43	52	61	70	83	<b>100</b>
E (%)	1	4	9	16	24	35	48	62	79.5	<b>100</b>

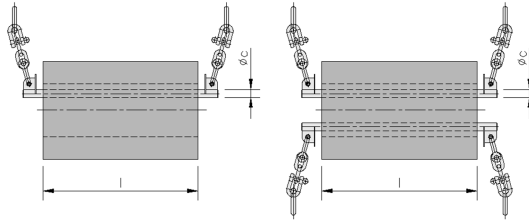
All dimension in mm, kN or kNm unless otherwise specified.  
\* (E) Energy [kJm] and (R) Reaction [kN] values according to PIANC 2002



## 4. FIXING METHODS



Fender	L	Chain	Shackle
150-75	≤3000	18	16
200-100	≤3000	22	20
250-125	≤3000	24	22
300-150	≤3000	26	25
380-190	≤3000	28	28
400-200	≤3000	30	28
450-225	≤3000	30	28
480-240	≤3000	32	32
500-250	≤3000	32	32
540-270	≤3000	34	35



Fender	L	Øc	ØU Anchor	Chain	Shackle
600-300	1000	50	30	22	20
	1500	60	30	26	25
	2000	70	40	30	28
	2500	80	40	32	32
	3000	90	40	36	35
700-350	1000	50	30	24	22
	1500	70	40	28	28
	2000	80	40	32	32
	2500	90	40	36	35
	3000	100	50	38	38
800-400	1000	50	30	24	22
	1500	70	40	30	28
	2000	80	40	34	32
	2500	100	50	38	38
	3000	100	50	42	38
900-450	1000	60	30	26	25
	1500	80	40	32	32
	2000	90	40	36	35
	2500	100	50	40	38
	3000	110	50	44	45
1000-500	1000	70	40	28	28
	1500	80	40	32	32
	2000	100	50	38	38
	2500	100	50	42	38
	3000	110	50	46	45
1100-550	1000	70	40	28	28
	1500	80	40	34	32
	2000	100	50	40	38
	2500	110	50	44	45
	3000	110	60	48	45
1200-600	1000	70	40	30	28
	1500	90	40	36	35
	2000	100	50	42	38
	2500	110	50	46	45
	3000	110	60	50	45
1300-650	1000	70	40	30	28
	1500	100	50	38	38
	2000	110	50	44	45
	2500	110	60	48	45
	3000	120	60	42*	50

Fender	L	Øc	ØU Anchor	Chain	Shackle
1400-700	1000	80	40	32	32
	1500	100	50	38	38
	2000	110	50	44	45
	2500	110	60	50	45
	3000	120	70	46*	50
1400-800	1000	60	30	26	25
	1500	80	40	32	32
	2000	100	50	38	38
	2500	100	50	42	38
	3000	110	50	46	45
1500-750	1000	90	40	34	35
	1500	100	50	40	38
	2000	110	50	46	45
	2500	110	60	42*	45
	3000	150	60	48*	50
1600-800	1000	90	40	34	35
	1500	100	50	42	38
	2000	110	60	48	45
	2500	120	60	44*	50
	3000	150	70	48*	50
1700-850	1000	90	40	36	35
	1500	110	50	44	45
	2000	120	60	50	50
	2500	120	60	44*	50
	3000	150	80	50*	50
1800-900	1000	90	40	36	35
	1500	110	50	44	45
	2000	110	60	50	45
	2500	120	70	46*	50
	3000	150	80	50*	50
1900-950	1000	100	50	38	38
	1500	110	50	46	45
	2000	120	60	42*	50
	2500	150	70	48*	50
	3000	180	80	54*	65
2000-1000	1000	100	50	38	38
	1500	110	50	46	45
	2000	120	60	44*	50
	2500	150	80	50*	50
	3000	180	80	54*	65

Fender	L	Øc	ØU Anchor	Chain	Shackle
2100-1050	1000	100	50	40	38
	1500	110	60	48	45
	2000	120	60	44*	50
	2500	150	80	50*	50
	3000	180	80	56*	65
2200-1100	1000	100	50	40	38
	1500	110	60	50	45
	2000	120	60	44*	50
	2500	150	80	52*	65
	3000	180	80	56*	65
2300-1150	1000	100	50	42	38
	1500	110	60	50	45
	2000	150	70	48*	50
	2500	180	80	56*	65
	3000	180	80	56*	65
2400-1200	1000	100	50	42	38
	1500	120	70	46*	50
	2000	150	70	48*	50
	2500	180	80	56*	65
	3000	180	80	60*	65
2500-1250	1000	110	50	44	45
	1500	120	70	46*	50
	2000	150	80	50*	50
	2500	180	80	56*	65
	3000	180	90	62*	65
2600-1300	1000	110	50	44	45
	1500	120	60	44*	50
	2000	150	80	50*	50
	2500	180	80	56*	65
	3000	180	90	62*	65
2700-1350	1000	110	50	44	45
	1500	120	60	44*	50
	2000	150	80	52*	50
	2500	180	80	58*	65
	3000	180	90	64*	65
2800-1400	1000	110	50	46	45
	1500	150	70	46*	50
	2000	180	80	54*	65
	2500	180	80	60*	65
	3000	180	90	66*	65

\*Stud link chain.

## 5. TOLERANCES

Dimension	Tolerances
Outside diameter	±4%
Inside diameter	±4%
Length	±30mm
Energy performance	±10%
Reaction performance	±10%

